

Together

**With Christ, in Hope,
for Future Generations**



**Our Savior Lutheran Church & School
Capital Campaign**



Letter From The Pastor

Dear Friends in Christ,

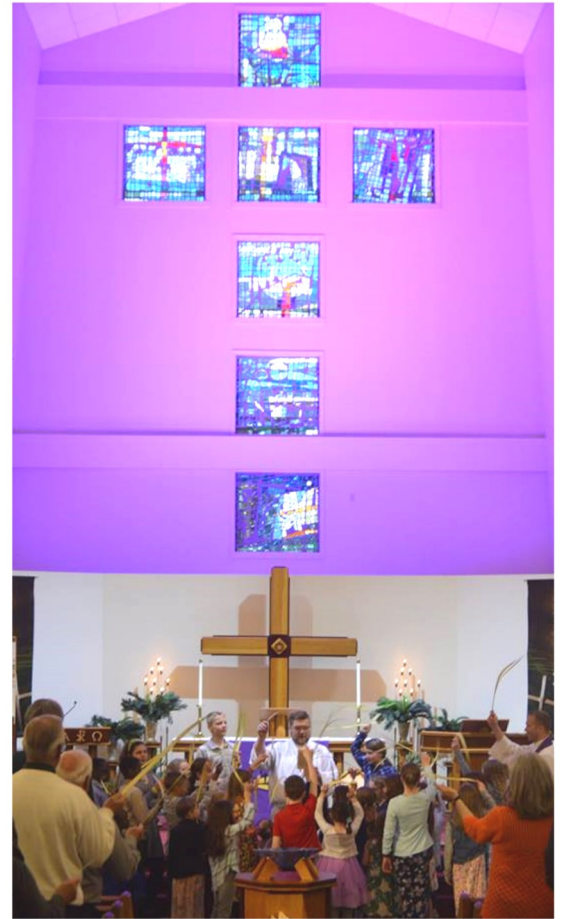
It's time. Our Savior is ready for another big step in ministry. We continue to see how our dynamic and growing ministry is reaching the lost and providing a solid Christian environment for families to learn, live and share Christ. We can take this next step in confidence and faith, trusting that we do this **TOGETHER** - with Christ, in Hope, and for the Next Generation!

The generations before us each had their moment of opportunity to grow and strengthen the ministry. This is our time. We want a thriving, healthy, faithful, vibrant Our Savior Lutheran Church and School for the next generation or until our Lord returns.

We are inviting all members, friends, and supporters of our ministry to participate in some way. It is an opportunity for tremendous spiritual growth as we consider our priorities, loosen our grip on material things, and seek first the Kingdom of God. I pray that each of you will be challenged, strengthened, and blessed through this big step of faith.

Let's come **TOGETHER** in this and see how the Lord will continue to bless and build His Kingdom here!

In Joyful Service to Jesus,
Pastor Bill Wangelin <><



But God, being rich in mercy, because of the great love with which He loved us, even when we were dead in our trespasses, made us alive **TOGETHER** with Christ—by grace you have been saved—and raised us up with Him and seated us with Him in the heavenly places in Christ Jesus.

Ephesians 2:4-6

Together

Capital Campaign

In 1956, over a hundred people came **TOGETHER** for the first worship service of Our Savior Lutheran Church. Their purpose was to extend the Kingdom of God and carry out the apostolic mission of Christ – especially through a school ministry.

Today, over 1,200 followers of Jesus call Our Savior Lutheran Church and School their church home, with over 230 students enrolled in our school ministry.

God has blessed Our Savior Lutheran with an amazing opportunity to *Learn, Live and Share Christ* with the greater Lansing area and in the heart of Delta Township. Our growth as a congregation and school ministry has stretched beyond our current ministry resources and staff. In order to lay a solid foundation for the future, the **TOGETHER** campaign will address debt reduction and facility care to open up more ministry dollars for meeting the needs of our growing church and school ministries while sharing the blessings through local and global Missions.

Together...

We are united with Christ, alive in Him,
joining Him on His mission.

(Ephesians 2:4-6, 21-22, Colossians 2:13)

We proclaim the message of hope, pointing people to heaven through the work of Christ, where we will be **TOGETHER** for eternity. (1 Thessalonians 4:17, 5:10)

We are working so that future generations will be able to Learn, Live and Share Christ through the ministries of Our Savior Lutheran Church and School. (Romans 15:5-6, Hebrews 10:24-25, Philippians 1:27)



Together

We Can Make a Difference

Debt Reduction for Greater Ministry Impact: \$1 million

Our Mortgage on our building currently stands at \$5 million. While we are making the monthly payments by God's grace and the generosity of God's people, paying down the principal of the loan and refinancing at a lower monthly payment would free up ministry dollars for increased pastoral staff, ministry to families and outreach to our community.

Facility Maintenance Fund for 3-4 Years: \$250,000

We are blessed with a beautiful facility and grounds, and want them looking their best as we gather people to Learn, Live and Share Christ. We plan to repave our parking lot in 3-4 years (\$200,000) and keep up with repairs on our highly utilized building. The Facility Maintenance Fund would serve as the "rainy day fund" to meet building needs as they arise.

Mission Partners Advancing the Great Commission: \$50,000

Our generosity cannot be focused only on ourselves, as God's work extends far beyond Our Savior. In order to increase that mindset in our ministry, we want to give a portion of our campaign to ministries beyond our walls—ministry partners that we joyfully support as their mission aligns with ours—the LCMS Michigan District, Martin Luther High School, Friendship House MSU, Hmong Ministry, the Our Savior Food Bank, and Middelburg, South Africa.

Impacting *Together* Ministry for Christ



Debt Reduction for Greater Ministry Impact

IMAGINE how we can do more ministry with less debt with increased pastoral and ministry staff who could help mobilize each member of Our Savior to Learn, Live and Share Christ. Reducing our mortgage payment would:

- Free up needed dollars to meet the opportunities of our dynamic and growing ministry.
- Decrease our liability should the economy fall on hard times.
- Show a firm commitment to our community that we consider it a blessing and privilege to be here.



Did You Know?

- Our monthly mortgage payment is \$31,000
- We pay nearly \$200,000 a year of interest on our loan
- We had a waiting list of 9 students for kindergarten that we had to turn away because of a full class.
- Our Savior has had 317 new members join the congregation in the last 5 years.

How might God be stirring us to greater ministry capacity that transforms hearts and homes through the power of the Gospel?

Building the Kingdom of Christ *Together*



Facility Maintenance Fund for 3-4 Years

IMAGINE our facility and property maintained as a landmark in the community of Christ-centered, family focused, inter-generational ministry. Hundreds of people use our facility every day.



From students learning and playing inside and out of the building, to worship service and Bible studies, to the community using our sports fields and playgrounds, our facility is a place for all to gather **TOGETHER** and share in the love of Christ. We are thankful for the funds from Light to our Path and Beat the Heat. We pray this building fund would replace the ongoing need to fundraise specific building related repairs.

Did You Know?

- Our parking lot is approximately 140,000 square feet and has 255 spaces
- In one weekend, we can have up to 2,000 people through our building, through athletics, worship, and events.
- Our Savior hosts many community events each year including: Grand Ledge High School music, Grand Ledge community sports, Delta Community Choir, Greater Lansing American Guild of Organists, various sports teams and more.

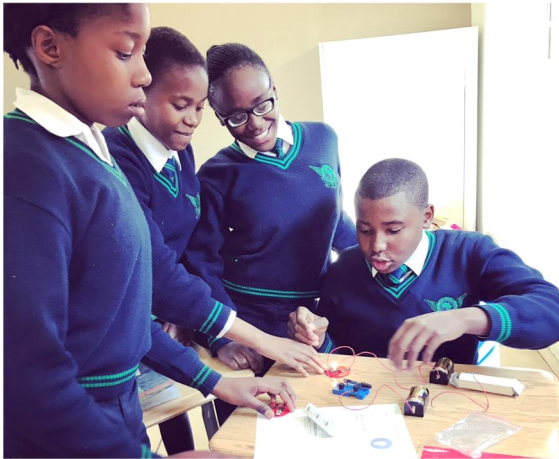
How might God be stirring us to maintain our building and grounds in a way that reflects the dynamic ministries and warm hospitality of our church and school?

Sharing the Good News of Christ *Together*



Mission Partners Advancing the Great Commission

IMAGINE our congregation supporting missions and ministries beyond our walls, as we work **TOGETHER** with ministry partners in the Great Commission.



We want to make sure that we are always looking outside our walls and including the work of the greater church in our scope of ministry. That is why we included a mission component to our campaign. We support many local, national, and international efforts to learn, live and share Christ. The **TOGETHER** Campaign would include support for the LCMS Michigan District, Friendship House MSU, Martin Luther High School, Hmong Ministry, the Our Savior Food Bank, and Middelburg, South Africa.

Did You Know?

- The International Friendship House serves up to 200 students a semester. OSL has many volunteers serving as teachers, board members, and supporters.
- Hmong Ministry came to Our Savior when we welcomed refugees in the 1970's.
- The ministries in South Africa include 4 congregations, a K-12 school, an Early Childhood Center, a Medical Clinic, an Orphanage, and Missionary Training Center
- The Our Savior Food Bank serves approximately 1,000 clients each month.

How might God be stirring you to catch the vision for today and tomorrow as we work together to impact the greater Lansing area and beyond?

Pledge *Together*

How might God be stirring us to greater ministry capacity that transforms hearts and homes through the power of the Gospel?

How might God be stirring you to give above and beyond as we work TOGETHER to impact the greater Lansing area?

Pledge Options

Pledge	Annual	Monthly	Weekly
\$ 130,000.00	\$ 43,333.00	\$ 3,611.00	\$ 833.00
\$ 65,000.00	\$ 21,666.00	\$ 1,805.00	\$ 416.00
\$ 30,000.00	\$ 10,000.00	\$ 833.00	\$ 192.00
\$ 25,000.00	\$ 8,333.00	\$ 694.00	\$ 160.00
\$ 20,000.00	\$ 6,666.00	\$ 555.00	\$ 128.00
\$ 15,000.00	\$ 5,000.00	\$ 416.00	\$ 96.00
\$ 10,000.00	\$ 3,333.00	\$ 277.00	\$ 64.00
\$ 5,000.00	\$ 1,666.00	\$ 138.00	\$ 32.00
\$ 2,500.00	\$ 833.00	\$ 69.00	\$ 16.00
\$ 1,500.00	\$ 500.00	\$ 41.66	\$ 9.00
\$ 1,000.00	\$ 333.00	\$ 27.00	\$ 6.00
\$ 500.00	\$ 166.00	\$ 13.88	\$ 3.20

October 27th is our *Commitment Sunday & Celebration* when **TOGETHER**, each family will make a 3-year pledge toward the **TOGETHER** campaign.

In great thanksgiving for the many blessings given by our gracious Lord, we ask you to prayerfully consider your faithful and generous contribution to ensure that Our Savior is thriving for future generations.

Together

We Generously Give



Generosity Guide

Most people want to give to the **TOGETHER** Campaign but don't know how to determine what amount they should give. There are two questions below that are designed to help you prayerfully make a healthy spiritual and financial decision that is best for you.

1. How much can I reasonably give above and beyond what I already give?

This *financial* answer has to do with how much I am *comfortable* giving. How much can I increase my offering for the next three years? Take a moment to review the "Sample Plan for Sacrificial Giving" chart below. What stands out to you? What could you sacrifice? Complete the "My family's Plan for Sacrificial Giving" below.

I could reasonably give \$_____ a year from my budget. x3 = \$_____

2. How much can I give if I really step out in faith?

This *faith* answer has to do with being *uncomfortable*. The amount I give stepping out in faith should make me a little (or a lot) uncomfortable. It makes me rely on God's promises to take care of me.

I am therefore giving \$_____

Sample Plan for Sacrificial Giving

Potential Resources	Weekly	Yearly	3 Years
Eliminate 1 meal out/week	\$35	\$1,820	\$5,460
Eliminate 1 coffee purchase/week	\$4	\$208	\$624
Eliminate 1 rented movie/week	\$6	\$312	\$936
Reduce Shopping/entertainment		\$500	\$1,500
Reduce Christmas Budget		\$250	\$750
Reduce Vacation Budget		\$300	\$900
Garage Sale Income		\$200	\$600
Total for 3 Years			\$10,770

My family's Plan for Sacrificial Giving

Potential Resources	Weekly	Yearly	3 Years
Eliminate 1 meal out/week			
Eliminate 1 coffee purchase/week			
Reduce Entertainment & Shopping Budget			
Other:			
Other:			
Other:			
Total for 3 Years			

Frequently Asked Questions

1. May I designate my gift?

If I don't designate, who will decide how my gift will be spent?

*The Board of Directors, along with a Committee of OSL members, has put **TOGETHER** a list of three different goals making up this effort. You can make an overall gift to the program or designate to a specific area(s) that is most important to you.*

- *Reduce the mortgage balance to free up Ministry dollars*
- *Building updates including parking lot resurfacing and a facility maintenance fund.*
- *Missions (South Africa, Hmong Ministry, MI District, locally)*

At this time no additional building is planned

2. How does paying more on the debt free up dollars?

If we pay down the mortgage, what dollars are freed up?

*God has blessed Our Savior mightily from our beginning in 1956 through this very day. As we have grown and ministered to increasing numbers of people, our gifts and needs have continued to expand. The current mortgage payment of \$31,000 monthly on our \$5,000,000 mortgage means interest payments of \$200,000 per year. Just dream about additional ways we could reach out **TOGETHER** to Lansing sharing the Gospel, if we can free up some of the \$200,000.*

3. Who are we inviting to participate?

*We are encouraging current members, school families not currently members of OSL and even alumni of the school to participate in this effort to maintain and expand the opportunities to reach the world. We have been blessed by the generous support of the entire OSL family. We hope to give everyone connected to OSL the spirit of working **TOGETHER** for our future.*

4. How is this capital campaign different than the previous ones?

I thought we weren't going to have another campaign?

*Our Savior was founded on the spirit of about **100-200** faithful Christians that **TOGETHER** gave sacrificially to make Our Savior Lutheran Church and School a reality back in 1956. Capital Campaigns have been part of OSL in the 1950's, 60's, 80's and 90's allowing us to grow the kingdom through outreach and our school. We weathered the perfect storm of 2008-09 as we moved to our current location through the generosity of members with the Forward with Christ campaign and subsequent pledge drives. Aside from some specific, special need requests we have not embarked on a Capital Campaign in several years.*

5. If we are meeting our needs, then why do we need to do this campaign?

*Our Savior is actually doing quite well. Through the generosity of our church family, school tuition and activities like the Auction, **TOGETHER** we are meeting the budget needs. God has blessed us with wonderful growth but our capacity to expand ministry is being challenged by our current debt and the need for facility maintenance and repairs.*

6. Is this goal attainable?

*Yes, by the Grace of God. Our prayer is that **TOGETHER** we can share equally in the excitement of this campaign. While the size of each gift may vary, we pray the sense of sacrificial giving, above and beyond our regular support, will be blessed by God to attain our goal. If we fall short of the goal, we will still have made a difference that moves our ministry forward.*

Forward *Together*

Sunday, October 6: TOGETHER Campaign Kick-Off

Worship at 8 & 10:45am

Thursday, October 10: Group Forum at 7pm, Music Room

Sunday, October 13: Worship at 8:00 & 10:45am

Group Forum at 9:30am, Music Room

Monday, October 14: Group Forum at 7pm, Music Room

Wednesday, October 16: Legacy Luncheon at 12pm &

Legacy Dinner at 6pm, Church Lobby

Sunday, October 20: Worship at 8 & 10:45am

October 26, 2019: Day of Prayer from 7am - 7pm

Evening of Prayer and Songs at 7pm

October 27, 2019: Commitment Sunday & Celebration

One Worship Service at 9:30am

Celebration at 10:45am in Gymnasium



Commitment Sunday & Celebration Sunday, October 27 @ 9:30am

We gather **TOGETHER** on Sunday, October 27th for one worship service at 9:30am to give praise to our Lord for all the many blessings he has given to us. During this time of praise and worship, we will have the opportunity to bring our pledge cards forward **TOGETHER** in support of the many ministries of Our Savior. After worship we will gather **TOGETHER** in the gymnasium for refreshments, fellowship, and an announcement of the total pledge for the **TOGETHER** campaign.

Imagine what God can do through us when we come

Together...

Young and Old

New Christians and Life-Long Followers

Those who have Much and Those who have Little

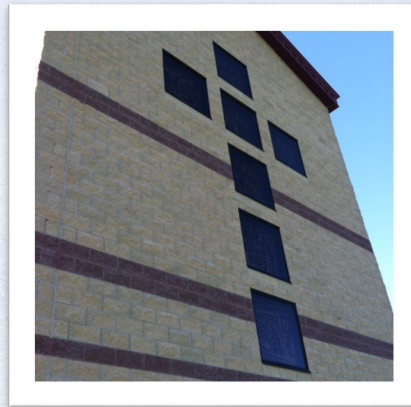
New Members and Long-Time Members

Church Ministries and School Families

Urban, Suburban, and Rural

All Nations, All Generations

All of Us, **TOGETHER.**



OUR SAVIOR LUTHERAN

Church and School

7910 E. St. Joe Highway
Lansing, MI 48917

OurSaviorLansing.org/Together

517.882.8665